

"Pathology and Immunology"

Santoni G, Nabissi M, Amantini C, Morelli MB, Zeppa L, Aguzzi C,
Giangrossi M, Cameli G

School of Pharmacy

School of Biosciences and Veterinary Medicine

Rapporto strutturati/non strutturati: 4/4



Research Day UNICAM
Camerino 12 dicembre 2024

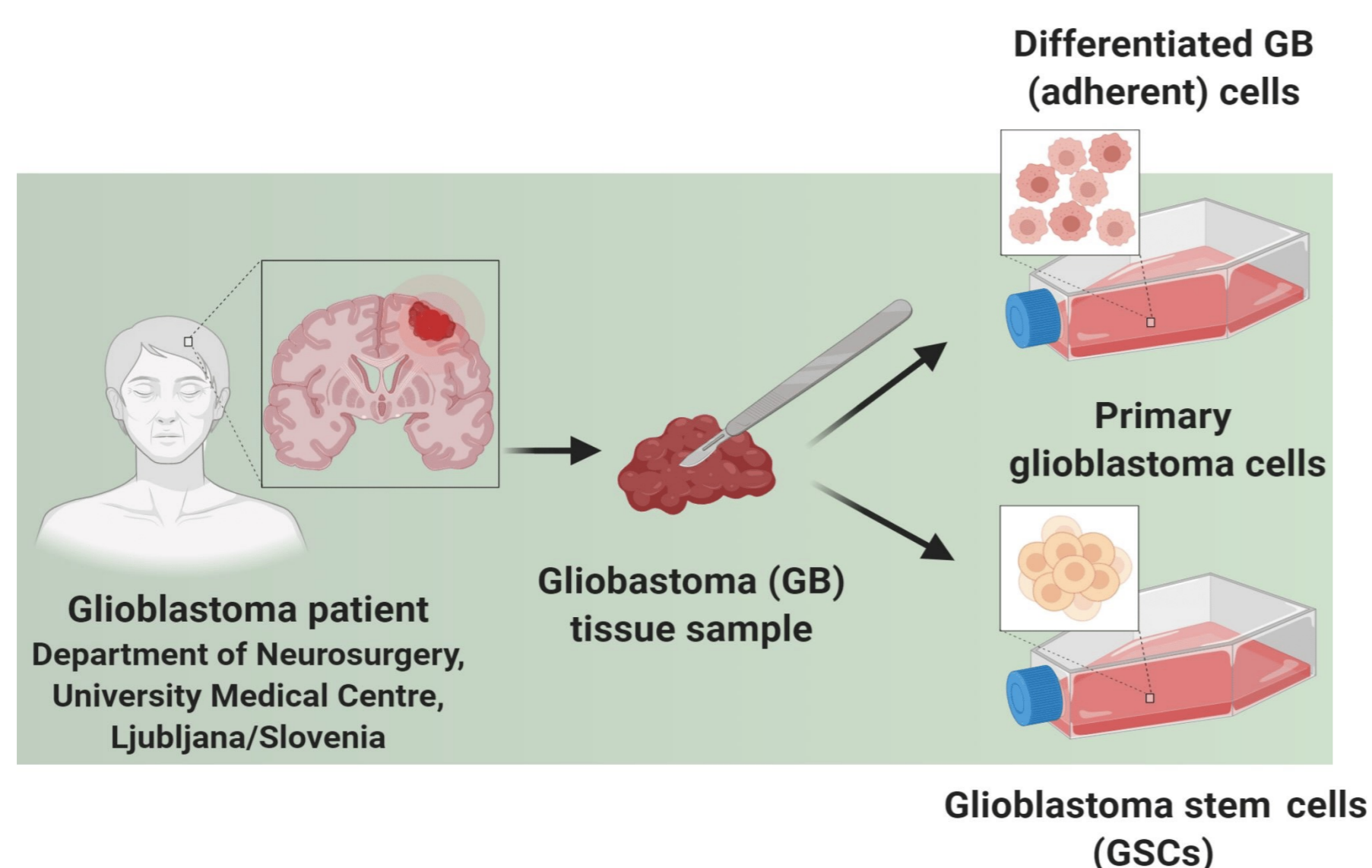


Characterizing studies

- 1) Role of cannabinoids and TRP receptors in cancer progression
- 2) Characterization of molecular mechanisms (apoptosis, autophagy, ER stress) in cancer
- 3) Evaluation of circulating tumor cells in liquid biopsy
- 4) Investigation of immune response in human diseases

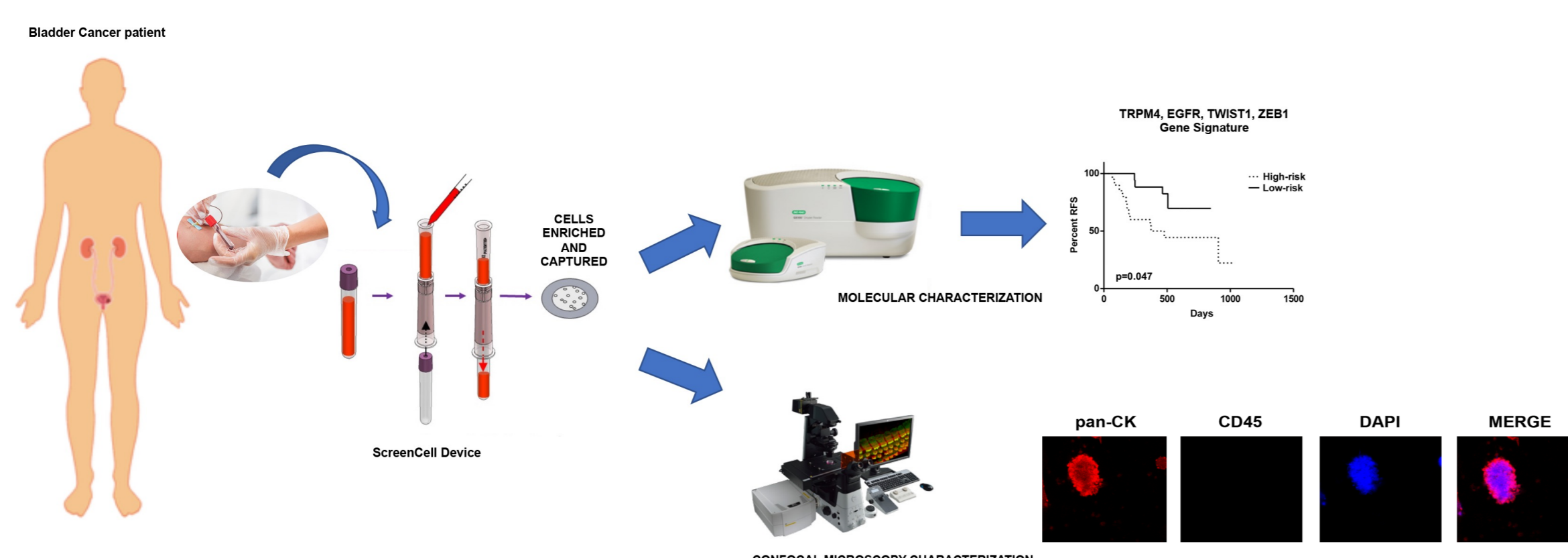
National Impact:

The research conducted by this group working in the field of cancer research has a significant national impact in enhancing diagnostic and monitoring strategies by investigating new molecular targets in collaboration with regional and national hospitals, cancer research centers, and medical foundations.



International Impact:

The research has a meaningful impact in contributing to improving patient management (targeted therapy, precision medicine, patient stratification). The international significance is proven by several publications in the oncology and immunology fields and by the interest of pharma companies in supporting our research.



Relations with SME:

Entourage Biosciences Inc
EPO srl
Sakura srl
Symbiotech srl

International collaborations:

Entourage Biosciences Inc. (Vancouver, Canada).
University Medical Centre (Ljubljana, Slovenia)
Julius Maximilian University of Würzburg (Würzburg, Germany)
INserm, Université de Lille (Lille, France)
Karolinska Institute (Solna, Sweden)
University of Leuven (Leuven, Belgium)

Sources of funding:

Ministerial (MUR *Prin*)
AIRC
Fondazione Veronesi
Fondazione Amor Onlus

Roles in scientific societies/Networks/Research centers:

Ambassador of European Association for Cancer Research